



Noise Monitoring Result

Day Time (0700 - 1900hrs on normal weekdays)

Location: M1a - Harbour Road Sports Centre

| Date | Time | Weather | Measurement Noise Level | | | Baseline Level | Construction Noise Level | Limit Level |
|-----------------------|-------|---------|-------------------------|------|------|----------------|--------------------------|-------------|
| | | | Leq | L10 | L90 | Leq | Leq | Leq |
| Unit: dB(A), (30-min) | | | | | | | | |
| 01/11/12 | 10:25 | Fine | 72.4 | 75.5 | 66.0 | 72 | 59 | 75 |
| 06/11/12 | 10:15 | Fine | 73.2 | 76.0 | 67.5 | 72 | 66 | 75 |
| 13/11/12 | 11:25 | Fine | 72.0 | 75.0 | 65.5 | 72 | 72 | 75 |
| 20/11/12 | 08:05 | Cloudy | 73.4 | 75.5 | 68.5 | 72 | 67 | 75 |

Location: M2b - Noon-day gun area

| Date | Time | Weather | Measurement Noise Level | | | Baseline Level | Construction Noise Level | Limit Level |
|-----------------------|-------|---------|-------------------------|------|------|----------------|--------------------------|-------------|
| | | | Leq | L10 | L90 | Leq | Leq | Leq |
| Unit: dB(A), (30-min) | | | | | | | | |
| 01/11/12 | 11:00 | Fine | 70.7 | 72.5 | 68.5 | 68 | 68 | 75 |
| 06/11/12 | 11:00 | Fine | 71.4 | 72.5 | 69.0 | 68 | 69 | 75 |
| 13/11/12 | 13:00 | Fine | 72.8 | 74.5 | 70.8 | 68 | 71 | 75 |
| 20/11/12 | 9:10 | Cloudy | 71.0 | 74.0 | 67.0 | 68 | 68 | 75 |

Location: M3a - Tung Lo Wan Fire Station

| Date | Time | Weather | Measurement Noise Level | | | Baseline Level | Construction Noise Level | Limit Level |
|-----------------------|-------|---------|-------------------------|------|------|----------------|--------------------------|-------------|
| | | | Leq | L10 | L90 | Leq | Leq | Leq |
| Unit: dB(A), (30-min) | | | | | | | | |
| 01/11/12 | 13:00 | Fine | 66.8 | 68.5 | 63.5 | 69 | 67 | 75 |
| 06/11/12 | 13:00 | Fine | 67.0 | 68.5 | 63.5 | 69 | 67 | 75 |
| 13/11/12 | 13:40 | Fine | 67.1 | 68.5 | 64.5 | 69 | 67 | 75 |
| 20/11/12 | 13:15 | Cloudy | 66.2 | 67.5 | 63.5 | 69 | 66 | 75 |

Location: M4b - Victoria Centre

| Date | Time | Weather | Measurement Noise Level | | | Baseline Level | Construction Noise Level | Limit Level |
|----------------------|-------|---------|-------------------------|------|------|----------------|--------------------------|-------------|
| | | | Leq | L10 | L90 | Leq | Leq | Leq |
| Unit: dB(A), (30min) | | | | | | | | |
| 01/11/12 | 13:39 | Fine | 73.2 | 75.0 | 70.0 | 67 | 72 | 75 |
| 06/11/12 | 13:35 | Fine | 71.3 | 72.5 | 69.5 | 67 | 69 | 75 |
| 13/11/12 | 14:25 | Fine | 71.2 | 72.0 | 69.0 | 67 | 69 | 75 |
| 20/11/12 | 14:00 | Cloudy | 71.4 | 72.5 | 68.0 | 67 | 69 | 75 |

Location: M5b - City Garden

| Date | Time | Weather | Measurement Noise Level | | | Baseline Level | Construction Noise Level | Limit Level |
|----------------------|-------|---------|-------------------------|------|------|----------------|--------------------------|-------------|
| | | | Leq | L10 | L90 | Leq | Leq | Leq |
| Unit: dB(A), (30min) | | | | | | | | |
| 01/11/12 | 14:20 | Fine | 72.4 | 73.0 | 70.5 | 68 | 70 | 75 |
| 06/11/12 | 14:15 | Fine | 71.1 | 72.0 | 69.5 | 68 | 68 | 75 |
| 13/11/12 | 15:10 | Fine | 70.5 | 71.0 | 69.0 | 68 | 67 | 75 |
| 20/11/12 | 14:50 | Cloudy | 69.8 | 71.0 | 68.0 | 68 | 65 | 75 |

Location: M6 - HK Baptist Church Henrietta Secondary School

| Date | Time | Weather | Measurement Noise Level | | | Baseline Level | Construction Noise Level | Limit Level |
|-----------------------|-------|---------|-------------------------|------|------|----------------|--------------------------|-------------|
| | | | Leq | L10 | L90 | Leq | Leq | Leq |
| Unit: dB(A), (30-min) | | | | | | | | |
| 01/11/12 | 15:00 | Fine | 74.3 | 75.5 | 72.5 | 71 | 72 | 70 |
| 06/11/12 | 15:00 | Fine | 74.2 | 75.0 | 72.5 | 71 | 72 | 70 |
| 13/11/12 | 15:50 | Fine | 72.9 | 76.3 | 67.8 | 71 | 69 | 70 |
| 20/11/12 | 15:30 | Cloudy | 72.5 | 73.5 | 70.5 | 71 | 68 | 70 |



Noise Monitoring Result

Day Time (0700 - 1900hrs on normal weekdays)

Location: M7e - International Finance Centre (Eastern End of Podium) (Reference Station)

| Date | Time | Weather | Measurement Noise Level | | | Baseline Level | Construction Noise Level | Limit Level |
|-----------------------|-------|---------|-------------------------|------|------|----------------|--------------------------|-------------|
| | | | Leq | L10 | L90 | Leq | Leq | Leq |
| Unit: dB(A), (30-min) | | | | | | | | |
| 01/11/12 | 8:35 | Fine | 67.3 | 70.2 | 65.9 | 67 | 58 | N/A |
| 06/11/12 | 8:35 | Fine | 70.4 | 71.5 | 68.5 | 67 | 68 | N/A |
| 13/11/12 | 9:50 | Fine | 69.1 | 71.0 | 65.5 | 67 | 65 | N/A |
| 20/11/12 | 10:15 | Cloudy | 70.2 | 71.0 | 67.5 | 67 | 68 | N/A |

Location: M7w - International Finance Centre (Western End of Podium)

| Date | Time | Weather | Measurement Noise Level | | | Baseline Level | Construction Noise Level | Limit Level |
|-----------------------|-------|---------|-------------------------|------|------|----------------|--------------------------|-------------|
| | | | Leq | L10 | L90 | Leq | Leq | Leq |
| Unit: dB(A), (30-min) | | | | | | | | |
| 01/11/12 | 08:00 | Fine | 65.1 | 65.9 | 64.5 | 69 | 65 | 75 |
| 06/11/12 | 08:00 | Fine | 67.5 | 69.3 | 65.0 | 69 | 68 | 75 |
| 13/11/12 | 9:15 | Fine | 66.9 | 68.0 | 64.0 | 69 | 67 | 75 |
| 20/11/12 | 10:50 | Cloudy | 67.6 | 69.0 | 65.5 | 69 | 68 | 75 |

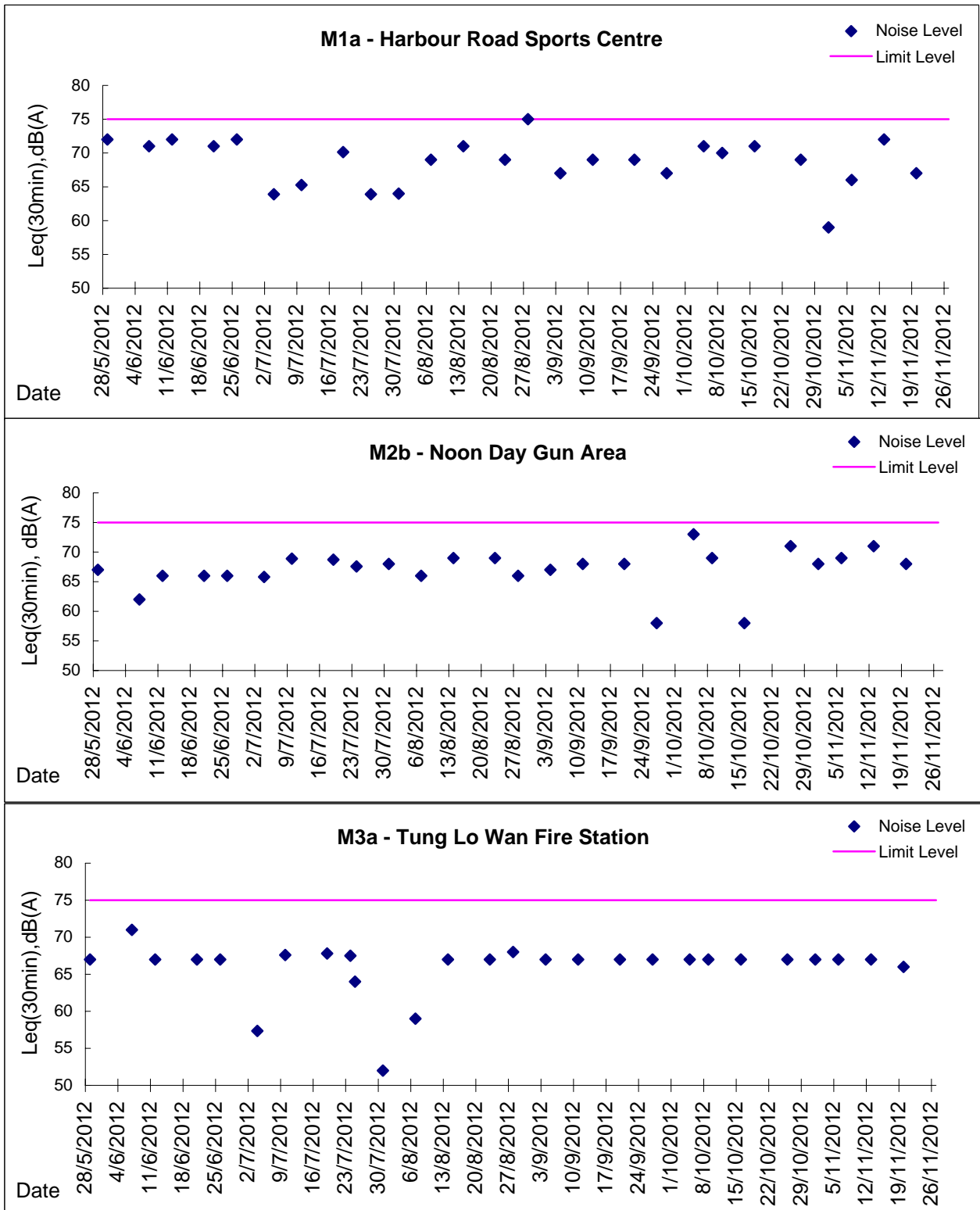
Location: M8 - City Hall

| Date | Time | Weather | Measurement Noise Level | | | Baseline Level | Construction Noise Level | Limit Level |
|-----------------------|-------|---------|-------------------------|------|------|----------------|--------------------------|-------------|
| | | | Leq | L10 | L90 | Leq | Leq | Leq |
| Unit: dB(A), (30-min) | | | | | | | | |
| 01/11/12 | 09:25 | Fine | 63.2 | 66.0 | 58.5 | 64 | 63 | 70 |
| 06/11/12 | 09:25 | Fine | 65.9 | 68.5 | 59.5 | 64 | 62 | 70 |
| 13/11/12 | 10:35 | Fine | 63.5 | 65.6 | 57.5 | 64 | 64 | 70 |
| 20/11/12 | 11:30 | Cloudy | 59.8 | 62.5 | 55.5 | 64 | 60 | 70 |



Graphic Presentation of Noise Monitoring Result

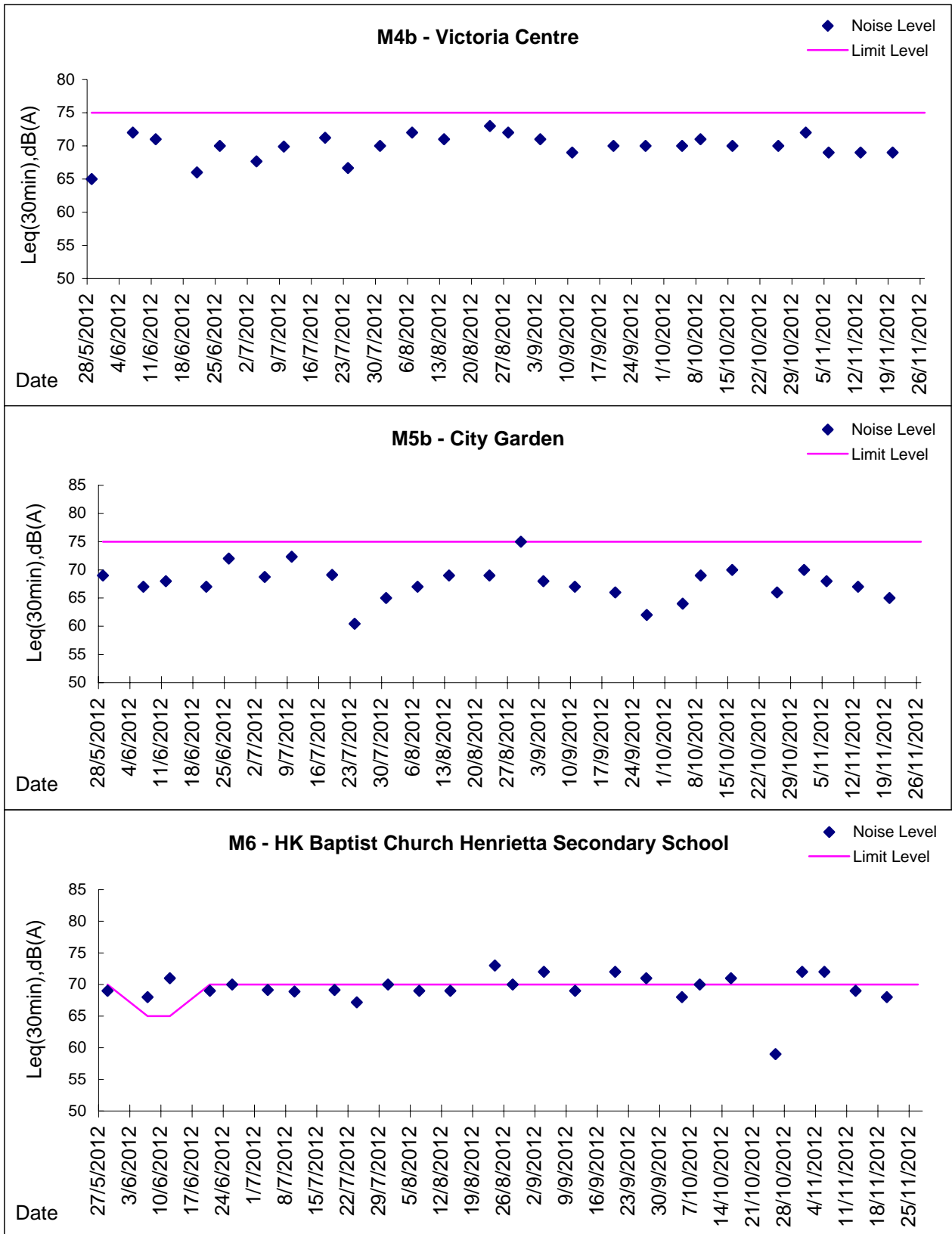
Day Time (0700 - 1900hrs on normal weekdays)





Graphic Presentation of Noise Monitoring Result

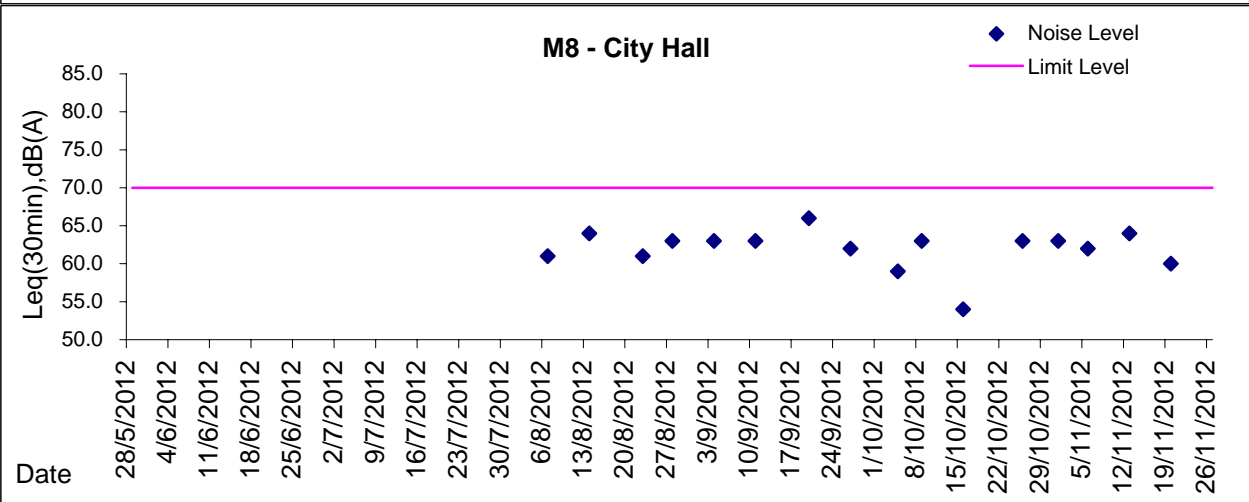
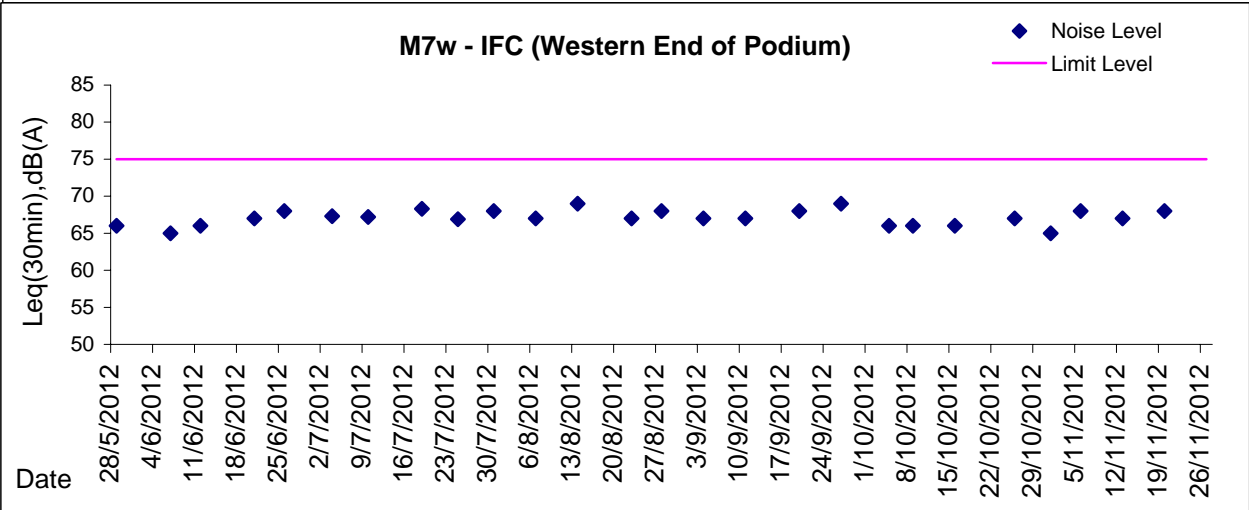
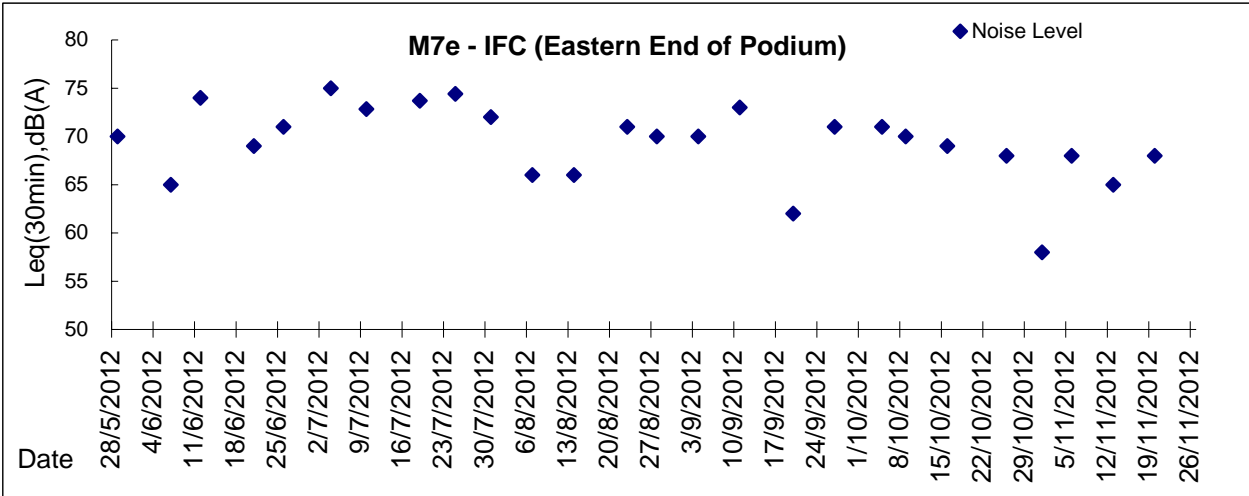
Day Time (0700 - 1900hrs on normal weekdays)





Graphic Presentation of Noise Monitoring Result

Day Time (0700 - 1900hrs on normal weekdays)



* Remark: M7e - IFC (Eastern End of Podium) is a reference monitoring station